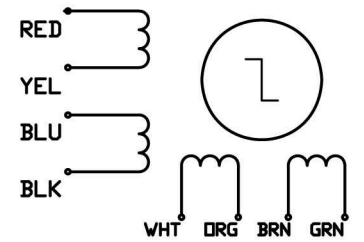


57MC22-S Stepper Motor

GENERAL SPECIFICATIONS

ITEM	VALUE
Step Angle	1.8 °
Step Angle Accuracy	± 5% (full step, no load)
Resistance Accuracy	± 10%
Inductance Accuracy	± 20%
Temperature Rise	80 °C Max.
Ambient Temperature	-20 °C ~ +50 °C
Insulation Resistance	100 MΩ Min., 500VDC
Dielectric Strength	500 VAC for one minute
Shaft Radial Play	0.02 Max. (450 g-load)
Shaft Axial Play	0.08 Max. (450 g-load)
Max. Radial Force	75 N (20 mm from the flange)
Max. Axial Force	15 N

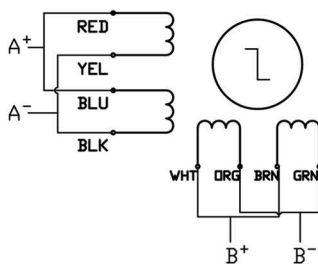
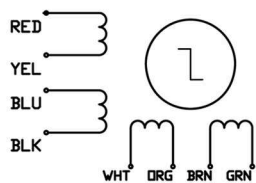
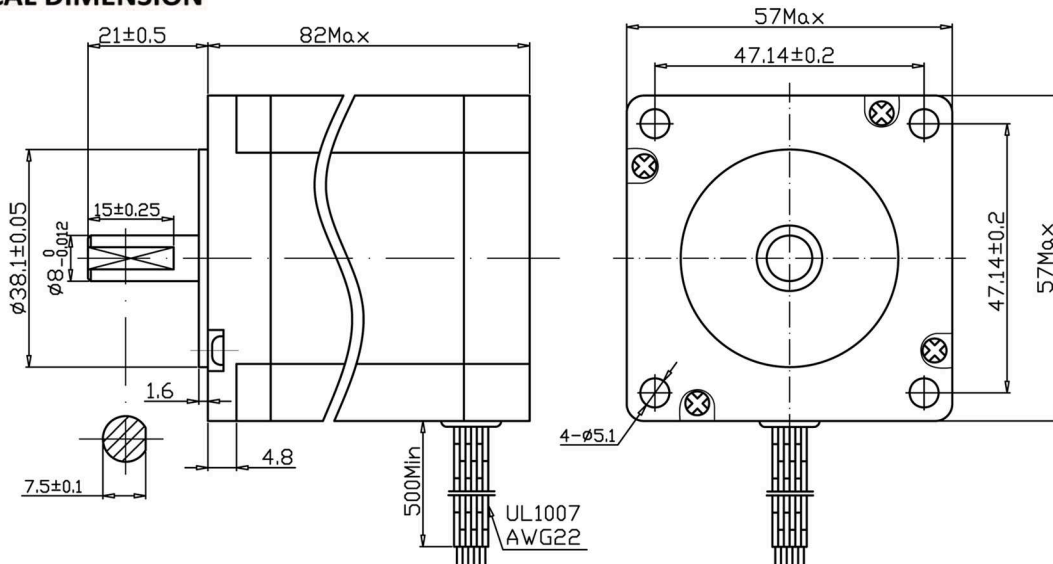
WIRING DIAGRAM



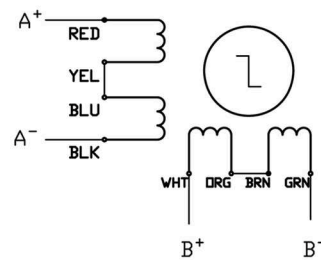
TECHNICAL SPECIFICATIONS

MODEL	CURRENT	RESISTANCE	INDUCTANCE	HOLDING TORQUE	DETENT TORQUE	ROTOR INERTIA	LEAD WIRE	WEIGHT	LENGTH
	A/∅	Ω/∅	mH/∅	N.cm	N.cm	g.cm ²	Pin	Kg	mm
57MC22-S	3.0	1.2	2.4	210	6.0	520	8	1.3	82

MECHANICAL DIMENSION



parallel



serial